

A Step Forward in Faith



Email – nfinke_kima@sbcglobal.net

“Share with God’s people
who are in need.”

Romans 12:13

January 26, 2006

PARTNER CONGREGATIONS



Members of Faith Lutheran Hot Springs Village,
Arkansas - Partners with San Mateo Lutheran Church,
San Luis Rio Colorado, Son.

KIMA encourages congregations to become "partner or sister congregations" with individual congregations of the Lutheran Synod of Mexico enriching them, supporting them with prayers, finances, and personal visits. A "partner or sister" congregation would take the lead in seeing to it that the needed assistance is made available. This could include:

- financial support of the pastor and his family
- providing resources for educational activities
- repair, maintenance, and expansion of church properties

- mission trips to this site

A "partner or sister" church would take the lead in these things but should feel free to consult with KIMA at any time for advice and additional support.

I would like to share with you a recent communication that I had with one of the members of **Faith Lutheran Church of Hot Springs Village, Arkansas**. Faith has become a partner/sister congregation with San Mateo (St. Matthew) Lutheran Church in San Luis Rio Colorado. San Luis is located about 30 miles southwest of Yuma, Arizona.

Dear Pastor and Marty,

As we begin the new year, it is with a great deal of excitement. We will be leaving for San Luis on Wednesday.

We have been in contact with Pastor Jiménez. This year he has asked for help in working on his mission churches in Fronterizo and Independencia. He would like an addition to the three sided building. He would also like it enclosed with a door and windows added. If money is available, a concrete floor. This would be for Independencia.

In Fronterizo, he would like repairs to the existing building. This building was there when it was purchased a few years ago by LWML. (California District). He would like it repaired, painted and a porch added.

This year was not a good year physically for our group. We are getting older and not able to do the work.

Bruce did check with Bill Atwood and found that no one was going to San Luis this year to work.

We talked to Pastor Jiménez and he thought that he could get the work done by members and workers there if we could provide the materials. We are providing the money.

Bruce and I are going to see how our money is being spent. We will be spending only three days there.

We are also taking Sunday School materials for a year. We ordered it from Concordia. We also ordered a number of story books from Concordia. Some adult study materials also.

They requested scissors, color books, colored paper, colors and glue. We think it will be enough for a long time.

Pastor received the Christmas gift from KIMA. I'm sure that he could use it. Thank you.

We continue to keep all of the Mexican Missions in our prayers. We are trying to take care of San Luis.

We had a chili luncheon in November. It was right after church service, so it was well attended. It was free will offering and we raised about \$2100. There was a matching gift of \$650 from Thrivent. We also had a rummage sale. These monies are for materials in their construction.

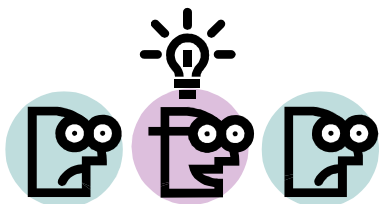
We are also taking 31 quilts that our ladies made and 45 tooth brushes that my dentist gave for them. We purchased tooth paste. We will be loaded to the top in the suburban. We now pray that we will be able to get it across the border.

Please keep us in your prayers. God's Blessings.

Bruce and Dot

To find out more information about "partnering" you might contact us through www.kimamission.org.

INDIVIDUALS AND GROUPS



Individuals and groups are encouraged to support with their prayers, finances, and time special projects like:

- the training of future pastors and leaders,
- supplying funding for:
 1. Spiritual Education Conferences
 2. academic books and resources
 3. children's ministries - Sunday School and V.B.S.
 4. worship resources
 5. tools for ministry
 6. aiding pastor's children in schooling (high school and university)

STRATEGY MEETING WITH KIMA, SLM, TEXAS DISTRICT



All projects that have been adopted and approved by the KIMA Board are a result of their consulting with the Council of the Lutheran Synod of Mexico and/or leaders of individual Lutheran congregations in Mexico.

All funds received by KIMA will be dispensed as designated by the givers. Projects picked to be funded become part of KIMA's budget. Line items will be dispensed, as funds become available. The Executive Director upon advice of the Executive Board will dispense undesignated funds.

KIMA is to be an agency to funnel God's love and resources to where it is needed to promote His Kingdom work. This is not just a casual walk to Emmaus but a rush back to Jerusalem to

share the exciting news that we have a living, loving Lord!

PHOTO GALLERY



On our website, www.kimamission.org we have included a photo gallery. It covers some of the congregations and activities of the Lutheran Synod of Mexico. We know that some of you have been on Mission trips to Mexico. We would like to share photos of those trips with our viewers. You would need to provide the pictures and any comments about them with Mr. Ralph Genz at Irgenz@sbcglobal.net.

MISSION TRIPS

Any mission trips that are being planned to any of the congregations of the Lutheran Synod of Mexico need to be authorized through the Lutheran Synod of Mexico. President Abiut Fajardo has designated Mr. Bill Atwood to be the coordinator of these trips. Coordination is necessary so that multiple groups don't show up at the same time causing problems with the activities and even possibly with housing, food, etc. **Mr. Bill Atwood** can be contacted by e-mail at wildmexicobill@earthlink.net or by phone at home 281-351-5898 or by his cell phone at 281-798-0432.

Messiah Lutheran from Bullock Creek, Michigan will be going to Guasave June 9 -16, 2006. They hope to focus on helping with any remaining construction of the San Pedro mission and ministering in Las Moras.

Immanuel Lutheran in Temple, Texas is planning on going to Monterrey in October
Salem Lutheran in Tomball, Texas is going to Rio Bravo in early June (no firm date yet)
Salem Lutheran in Tomball, Texas is going to Guadalajara in mid July (no firm date)

According to their website, CAN-DO is presently planning trips to SLM churches in Guasave in July on the 8-15 and to Guadalajara sometime this summer.

MISSION: POSSIBLE

We have a mission trip preparation kit for groups who may be thinking of going on a mission trip. This is not to help you decide if, when, and where to go but to prepare participants for the mission at hand. It is called "Mission: Possible" and was put together by Messiah Lutheran in Bullock Creek, Michigan. You may have to modify it a bit to fit your needs but I think that it is an excellent tool. If anyone is interested in receiving a copy of this, please, contact us at nfinke_kima@sbcglobal.net.

PRESIDENT ABIUT FAJARDO'S REPORT ON THE CONDITION OF THE CHURCHES OF THE

SLM

(letter edited)



December 19, 2005
Norman Finke
Executive Director of KIMA

I desire that the peace of the Triune God is with you and your family and with each of the brothers who support the KIMA Mission Society. In response to the mail that you sent me and the conversation that we had by telephone, I make the following comments to you in respect to the situation in which the congregations of the S. L. M are working.

Mexicali:

Because Mrs. Rosas doesn't want to leave the pastoral house, the problem with Pastor Rosas' family continues. There are a lot of hard feelings. We pray that this whole conflict ends and that the congregation that has so much desire for working can come out ahead.

San Luis Rio Colorado:

There the situation is stable to a certain extent. Pastor Filiberto continues assisting his 3 preaching places with the help of his family, because he is already a person of advanced age. Frequently he gets sick because of different causes.

Guasave:

The work of biblical studies is being carried out in the *San Pedro mission* and beginnings are being made in the public land of *Las Moras*. Regrettably in Guasave, with the congregation *The Divine Emanuel* the results are not coming about that were expected. We worry about this.

Monterrey:

As we know Pastor Samuel has had little time since arriving and recently being installed at the congregation of El Sembrador. There is a small and beautiful congregation of approximately 20 members. We desire and we pray to God that now the work in that place continues growing and with their pastor they bear much fruit.

Matamoros and Rio Bravo: (Santisima Trinidad and Betania)

In those places, as far as I know, they are stable working with the support of Brother Isaac, Sundays in the morning at Matamoros and in the evening at Rio Bravo. Also our prayer is that in those places the work grows under the direction of the Holy Spirit.

Mexico D.F.

The Congregation *El Buen Pastor* is now with the support of Pastors Dr David Brondo and Dr. Jose Alcántara because Pastor Alvaro Lopez was called to serve San Pablo congregation in the same city of Mexico. The congregation El Buen Pastor is a congregation with adequate proceedings and with strong leadership. At the moment their worship services are bilingual, multicultural. We also pray to God for this congregation so that it stays with that strength of leadership and self-sufficiency.

San Pedro:

As we know the pastor who was there, Samuel Perez, was called to serve in the congregation the El Sembrador (Monterrey) and at the moment is without a pastor. Nevertheless, this congregation is characterized by its strong leadership. They are going ahead with the participation of the leaders alternating with the preaching and the conducting of the liturgy. In this time of almost five months without a pastor, some ministerial pastors have been invited for the Holy Supper and the word. We pray that our God continues fortifying the faith of our brothers of San Pedro and soon he fills their needs of a pastor.

San Pablo:

Pastor Alvaro Lopez was called to support that congregation because of the death of Rev. Jaziel Lopez. Because of the Jaziel's long illness there might have been some imbalance or disruptions in the congregation for the lack of its pastor's constant leadership, although this congregation is also characterized by strong leadership. We pray to our God for the strength of our siblings of San Pablo and with Pastor Alvarós arrival to recapture their vision and activities for the growth of the work of the Lord in that area.

Guadalajara:

In the Todos Santos congregation we are also stable in our activities, all the members in the congregation are participating in the activities that we made and gradually the English community shares more with the Mexican community. We wished to continue working in this place for the growth of the deeds of our Lord. These are our prayers.

I infinitely thank the whole support and help that KIMA has given us under your direction. In the pastors' name and for the congregations that make up the Lutheran Synod of Mexico we wish you a Merry Christmas and prosperous year 2006 filled with grand achievements and peace. We pray that our Triune God multiplies in each one of you the blessings that you have shared with us. Please share this with each one of the siblings that belong to and support KIMA.

Fraternally in Christ

Rev. Abiut fajardo

President of the Lutheran Synod of Mexico



ACHIEVEMENTS

During the year 2005 we have been blessed. We began the year with a starting balance of \$19,089.14. The gifts and donations for the year came to \$66,177.61. Expenditures came to \$65,679.30, leaving a balance of \$20,647.33 to begin the new year.

We have:

- \$3,567.90 set aside for administrative purposes that will probably be used by the SLM for their annual National Assembly, synodical convention.
- \$4,558.95 set aside for the next Spiritual Retreat. Salem Tomball will help with the program expenses.
- \$6,023.66 for the building of the temple church in San Pedro near Guasave. We are awaiting the final projected cost on this structure.
- \$3,307.99 for tuition and materials for those studying to be pastors and leaders of congregations.

Those funds total up to \$17,758.50 leaving \$2,888.83 to cover pastoral financial support which amounts to \$1,650.00 a month.

Last year we were able to help:

- Pastor Isaac Garcia with \$9,970.87.
- Pastor Jose Reyes with \$12,707.12.
- Rev. Samuel Perez with \$4,777.72
- Rev. Filiberto Jimenez with \$1,897.52. Pastor Jimenez's church partnered with Faith Lutheran in Hot Springs Village, Arkansas.
- San Pablo Lutheran Church in Mexico City with \$2,251.58
- San Pedro Lutheran Church in Mexico City with \$ 597.73
- Santisima Trinidad Lutheran Church in Matamoros with \$150.00.
- Rev. Abiut Fajardo with \$4,414.00.
- Magdiel Fajardo with \$1,092.18 for college expenses.
- Samuel Garcia Marquez with \$1,260.00 as he studies for the ministry.

- Jose Luis Moreno Alvarado with \$1,260.00 as he studies for the ministry.
- The construction of the church at San Pedro near Guasave with \$14,000.

Included in the above were Christmas gifts. \$1,000 was given to each of the married pastors. Each wife of a married pastor received a separate \$50 gift. Pastor Alvaro Lopez received \$500 and Pastor Jaziel Lopez' wife received \$400. The two congregations of Santisima Trinidad in Matamoros and San Pedro in Mexico City received gifts of \$150.

It needs to be understood that all this would be impossible except for the gifts of congregations, groups, and individuals. **Christ the King of Waxahachie** and **Ascension of Cleburne** have included KIMA with a percentage of their monthly budgets. We receive regular monthly gifts from **St. Luke in Olney** and **St. Paul in Plainview**, from the **Men's group at Ascension Lutheran in Cleburne** and the **LWML at Trinity Weatherford**. I spoke at **Trinity Weatherford's** Mission Festival and they gave us their Mission Festival offering. Some of you individually give each and every month and other churches, groups, and individuals for special needs or occasions.

JOB JIMÉNEZ

We have been helping Pastor Filiberto Jiménez send his son Job to school. We had a special gift of \$600 to assist Job with his schooling which costs \$120 a month. As of February this funding will have run out. We will need another \$480 to complete the school year. We are praying that Job will be led by the Holy Spirit to continue his schooling preparing to study for the ministry.



Here is a **thank you letter** we received from **Rev. Samuel Perez**. He is just settling into his new home and church.

January 21, 2006

Pastor Norman Finke

Dear friend and brother in Christ, my family and I greet you very brotherly in the name of Christ. First I want to ask your forgiveness for having taken so long to write this letter to you since we should have sent it at the end of the year, but I send it now with the affection of my family and me.

Finke shepherd I want to be thankful to you for the Christmas present that you sent to us. It was a great blessing for my family. It was well invested in articles of foremost necessity for our house. We prayed that God would continue prospering your ministry.

Here in Monterrey and particularly in the church of The Sower, we are preparing ourselves to make a great work of Evangelism and Christian education. This Church has a great prospect for growth, to the end of which, we hope to have many souls saved for the glory of God.

Thanks Pastor Finke, by the Aid of KIMA, for our material monthly support. We hope to know how to respond to that special affection that you feel for the Church in Mexico.

We want to also work in harmony with the other Pastors to have a good missionary project for the Lutheran Synod of Mexico. We all have a Great Commission on the part of Christ to fulfill, and we hope in this year to have an improvement that brings blessing and satisfaction to all of us.

Our prayers for You. wishing that the blessings of God are abundant in this year.

BROTHERLY,

His in Christ
Pastor Samuel Perez Gaona.

Contact may be made with any of the Board members by going to www.kimamission.org.

Contributions may be sent to :
KIMA
109 Noel
Waxahachie, TX 75165

You are a blessing! May the Lord bless you, your families, and your ministries!

Rev. Norman R. Finke
Executive Director of KIMA

We would appreciate it if you could pass along copies of our newsletter or post it on a bulletin board where people could read it.

If you'd rather NOT receive occasional email updates from KIMA at this time, then reply to this message with "No Thanks" in the subject line.