



## May Newsletter 2012

Rev. Norman Finke

### Koinoneo Independent Mission Agency

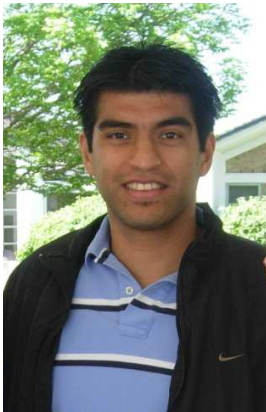
109 Noel • Waxahachie, TX 75165-1333

Telephone: 972-935-8017 • [nfinke\\_kima@sbcglobal.net](mailto:nfinke_kima@sbcglobal.net)

[www.kimamission.org](http://www.kimamission.org)

May 8, 2012

---



Magdiel Fajardo is a student at Concordia Theological Seminary in Fort Wayne and has been studying this year at Westfield House in Cambridge, England. Mac has been placed at St. Paul Lutheran Church in Whiting, Indiana. He finishes his classes at Cambridge in June and will be back in the States by July. Vicarage starts either in August or September.

**Whiting** is a city located in the Chicago Metropolitan Area in Lake County, Indiana, which was founded in 1889. The city is located on the southern shore of Lake Michigan. It is roughly 16 miles from the Chicago Loop and just short of two miles from Chicago's South Side. Whiting is home to Whiting Refinery, the largest oil refinery in the Midwest. The population was 5,137 at the 2000 census.



## St. Paul Lutheran Church

**1801 Atchison Avenue - Whiting, IN 46394**

---

St. Paul is part of the SELC District. Along with the English District it has no geological boundary. Originally it was the Slovak Evangelical Lutheran Church. When it became part of the Missouri Synod and was called the SELC District and was known as the Synod of the Evangelical Lutheran Church.

To find out more information about St. Paul Lutheran Church in Whiting, Indiana you can go to :

<http://www.stpaulwhiting.org>

Please keep Magdiel in your prayers as he finishes up in England and comes back to begin his vicarage in Whiting, Indiana.

Rev. Norman R. Finke

Director of KIMA